

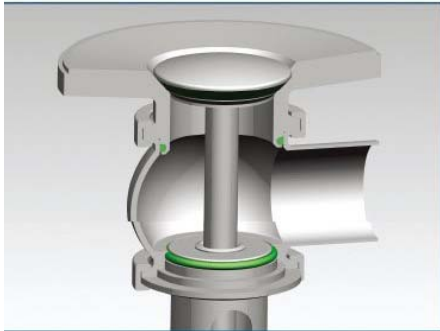
**SEPAK**

**INDUSTRIES PTY LTD**

[www.sepak.com.au](http://www.sepak.com.au)



## **Tank Bottom Seat Valve**



## APPLICATION

- The tank bottom seat valve is a single pneumatically actuated valve usually connected to the bottom of the tank. Suitable for dairy, food-processing, beverage production, pharmaceutical and fine chemical industries

## Operating principle

- The tank bottom seat valve works with single-effect actuator or double-effect actuator.
- The shaft is actuated with the compressed air to open or close the valve
- Configuration of valves: the valve seat opens inside so that it can avoid opening by accident due to much pressure in the pipes

## Design and features

- Sanitary design according to 3A
- Total drainage prevents the stagnation of the product
- Normally closed valve-closed (closed by spring) - standard version
- Normally open valve (opened by spring) by a simple turn of pneumatic actuator
- The seat valves opens into the tank to avoid accident opening
- 360 degree adjustable body, even after welding the flange to the tank
- Open lantern for the visual inspection of the shaft sealing
- Easy disassembly by loosening the clamp
- Connections: clamp and flanges

### Material

- Parts in contact with product : AISI 316L, AISI 304
- Other stainless steel parts : AISI 304
- Gasket (standard) : EPDM according to FDA 177.2600
- Internal surface finish :  $Ra \leq 0.8 \mu m$
- External surface : Bright polish

### Options

- Manual actuation
- Steam barrier (if sterilisation is required)
- C-Top control unit
- Internal surface finish:  $Ra \leq 0.5 \mu m$
- Gasket: NBR or FPM (Viton (R))
- Connections: DIN, Clamp, SMS, RJT, FIL-IDF, Flange etc
- Double-acting actuator
- External position sensors

### Technical specifications

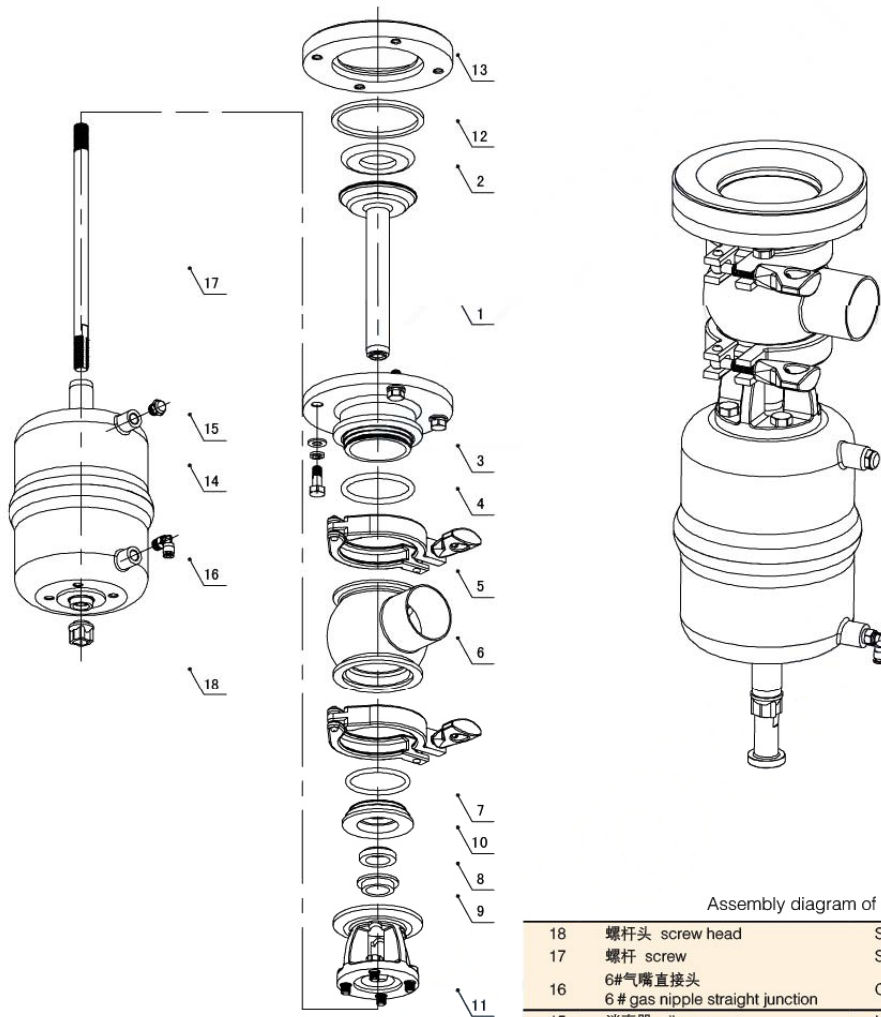
- Available sizes : DN 25-DN 100 DN 1"-Dn 4"
- Working temperature : -10°C to +120°C(EPDM) 14°F to 248°F  
+140°C (SIP, max. 30 min) 284°F
- Max working pressure : 10bar 145 PSI
- Compressed air pressure : 6-8 bar 87-116 PSI
- Air supply connections : G 1/8" (BSP)



# SEPAK

## INDUSTRIES PTY LTD

[www.sepak.com.au](http://www.sepak.com.au)



罐底阀装配图

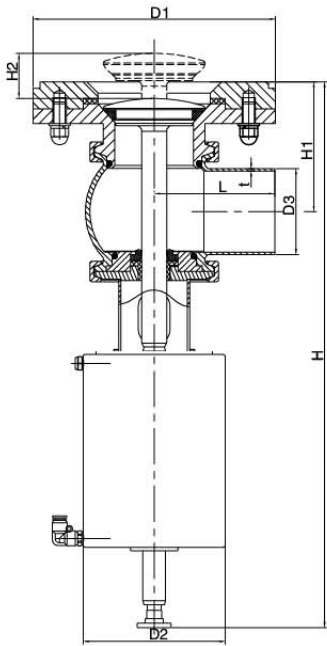
Assembly diagram of tank bottom seat valve

18	螺杆头 screw head	SUS304	1
17	螺杆 screw	SUS304	1
16	6#气嘴直接头 6 # gas nipple straight junction	Other	1
15	消声器 silencer	H62	1
14	气动执行器 pneumatic actuator	SUS304	1
13	焊接法兰 weld flange	EPDM	1
12	密封垫圈 gasket	PTFE	4
11	连接件 connection part	SUS304	1
10	内连接 inner connection	SUS304	1
09	T型定位衬套 T type locating bush	PTFE	1
08	密封衬套 gasket bush	EPDM	1
07	O型密封圈 O type gasket	NBR	1
06	阀体 valve body	SUS304	1
05	卡箍 ( φ 106 ) clamp	SUS304	2
04	O型密封圈 O type gasket	NBR	1
03	罐底法兰 tank bottom flange	SUS304	1
02	同心密封圈 concentric gasket	EPDM	1
01	阀芯 valve cartridge	SUS316L	1



**INDUSTRIES PTY LTD**

[www.sepak.com.au](http://www.sepak.com.au)

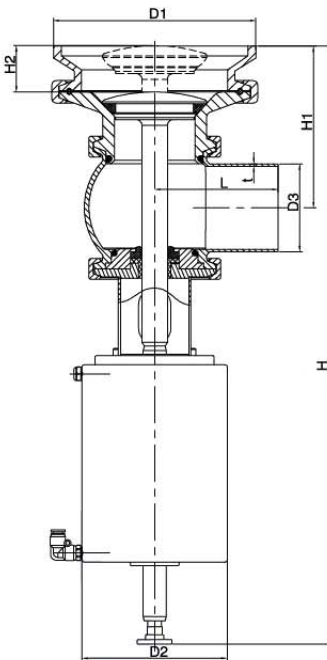


No.50061 tank bottom seat valve

SIZE	D1	D2	D3		H	H1	H2	L	t
			1	2					
DN40	120	85	40	41	395	85	30	60	1.5
DN50	130	126	52	53	440	95	46	70	1.5
DN65	165	126	70	-	450	105	50	80	2.0
DN80	180	126	85	-	520	120	52	90	2.0
DN100	215	168	104	-	600	140	62	125	2.0

No.50062

SIZE	D1	D2	D3	H	H1	H2	L
1 1/2"	120	85	38.1	395	85	30	60
2"	130	126	50.8	440	95	46	70
2 1/2"	165	126	63.5	450	105	50	80
3"	180	126	76.2	520	120	52	90
3 1/2"	180	126	89	520	120	52	90
4"	215	168	101.6	600	140	62	125



No.50063 tank bottom seat valve

SIZE	D1	D2	D3		H	H1	H2	L	t
			1	2					
DN40	70	85	40	41	395	95	30	60	1.5
DN50	89	126	52	53	440	105	46	70	1.5
DN65	108	126	70	-	450	115	50	80	2.0
DN80	127	126	85	-	520	130	52	90	2.0
DN100	154	168	104	-	600	150	62	125	2.0

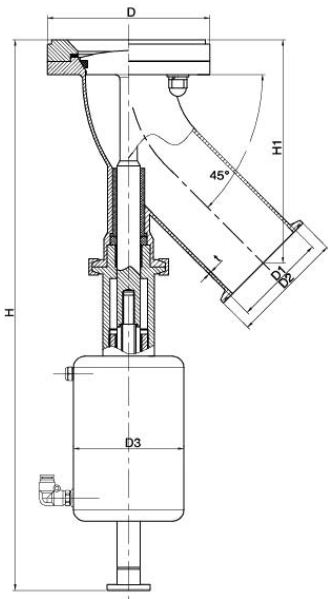
No.50064

SIZE	D1	D2	D3	H	H1	H2	L
1 1/2"	70	85	38.1	405	95	30	60
2"	89	126	50.8	450	105	46	70
2 1/2"	108	126	63.5	460	115	50	80
3"	127	126	76.2	530	130	52	90
3 1/2"	127	126	89	530	130	52	90
4"	154	168	101.6	610	150	62	125

# SEPAK

## INDUSTRIES PTY LTD

[www.sepak.com.au](http://www.sepak.com.au)

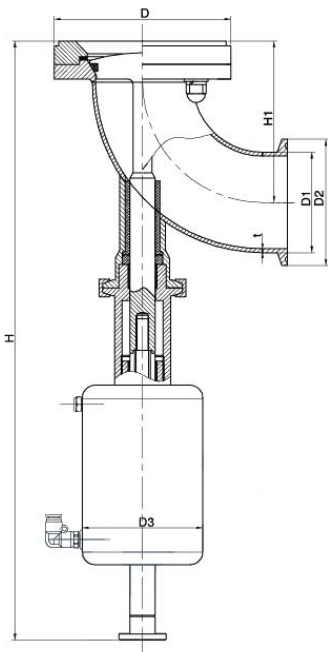


No.50065 45 degree elbow tank bottom seat valve

SIZE	D	D1	D2	D3	H	H1	t
DN50	112	52	64	76	338	112.5	1.5
DN65	112	70	77.5	76	365	153.5	2.0

No.50066

SIZE	D	D1	D2	D3	H	H1
2"	112	50.8	64	76	338	112.5
2 1/2"	112	63.5	77.5	76	365	153.5



No.50067 90 degree elbow tank bottom seat valve

SIZE	D	D1	D2	D3	H	H1	t
DN50	112	52	64	76	338	87	1.5
DN65	112	70	77.5	76	365	121	2.0

No.50068

SIZE	D	D1	D2	D3	H	H1
2"	112	50.8	64	76	338	87
2 1/2"	112	63.5	77.5	76	365	121