

SYSTEM OVERVIEW

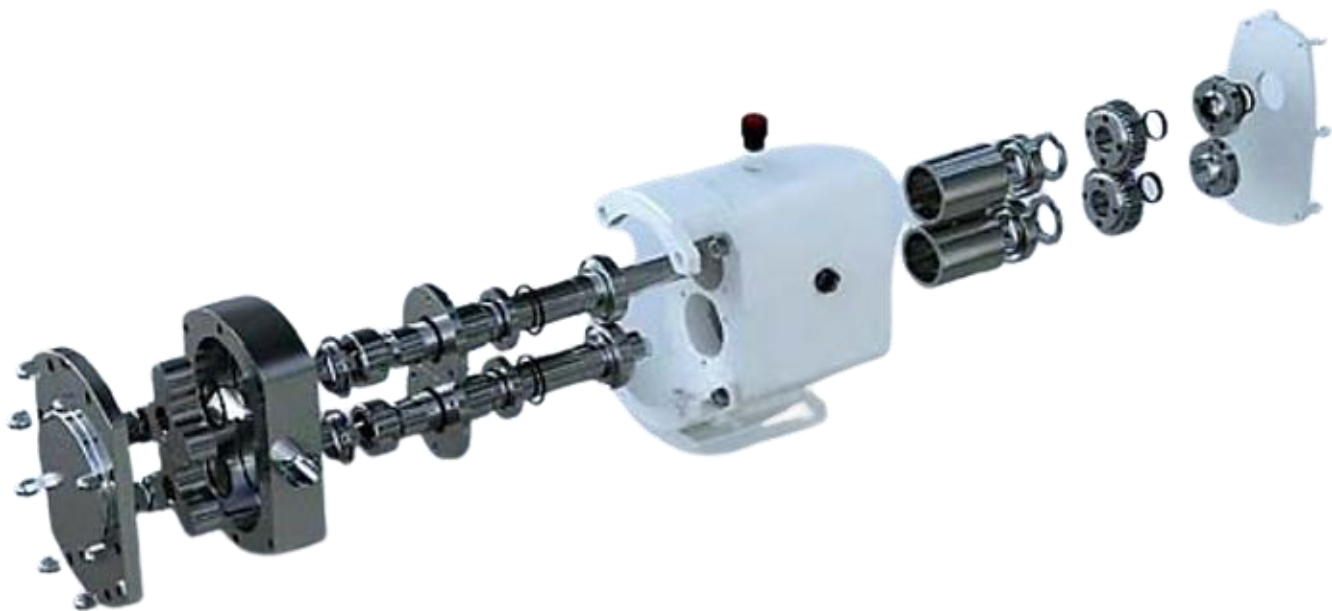
The impeller is housed between the inlet body and the venturi casing, and it rotates in conjunction with the pump shaft.

The rotation of the impeller and arrangement of the side channel creates a negative pressure inside the inlet body, which generates the suction force of the pump. At the same time the fluid receives energy in the form of kinetic energy and pressure energy, and this impels it through the impeller casing.

[PLEASE CLICK HERE FOR FULL TECHNICAL PRODUCT BROCHURE](#)

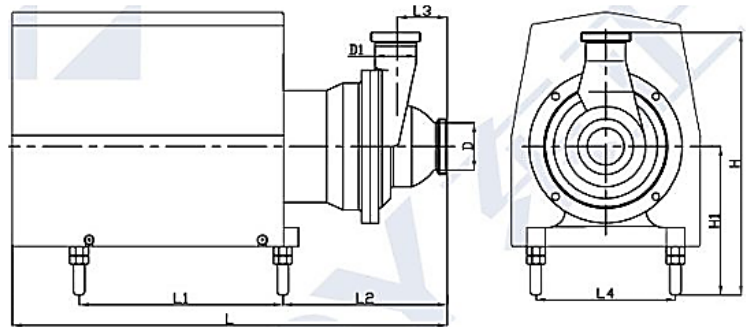
APPLICATION

- The pump is a sanitary side channel self-priming pump. Suitable for food processing, pharmaceutical and chemical industries.
- It is a specially designed pumping materials containing air or gas, and it can also be used for negative suction with prior priming as well as with filtration equipment.
- It can be used with wine, oil, syrups, volatile products such as alcohol, acetone, and other solvents, or with products at temperature close to boiling point. However, the main use of this pump is for CIP return.



FEATURES

- Casing manufactured from cold formed plates
- Stainless Steel investment casting inlet body and impeller
- Stainless Steel support
- Mechanical seal preventing contact between springs and pumped fluid.



MATERIALS

- **Parts in contact with pump media:** AISI-316/304
- **Other Parts:** AISI-304
- **Gaskets:** EPDM
- **Mechanical Seal:** C/SiC/EPDM
- **Internal Surface Finish:** Polished
- **External Surface Finish:** Sandblasted

TECHNICAL SPECIFICATIONS

- **Max flow:** 30m³/h/132GPM
- **Max head:** 30 H(M)
- **Max pressure:** 3bar/43 PSI
- **Max operating temperature:** 120 °C/248°F
- **Max rev:** 1750 min
- **Max suction height:** 8M/22ft

